

SSPEX-C SERIES STAINLESS STEEL PEX COUPLING

SPECIFICATION:

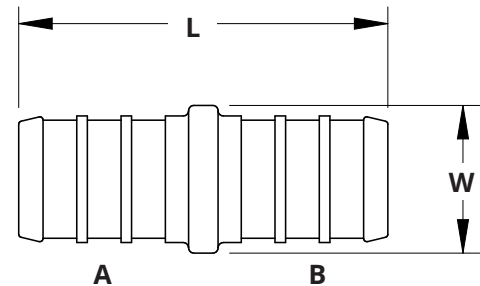
- For use with ASTM F2769, ASTM F2023, (PE-RT) SDR9 pipe
- For use with ASTM F876 PEX pipe
- Fittings are made to ASTM F1807 standard
- Maximum Pressure Rating: 200 PSI
- Temperature Range: Up to 400°F (204°C)

CERTIFICATION:

- cUPC Listed
- NSF/ANSI 61 & 372 Certified



MATERIAL LIST	
Name	Percent of Composition
304 Stainless Steel	
Iron (Fe)	64.0 - 72.0
Carbon (C)	0.08 max
Silicone (Si)	1.00 max
Manganese (Mn)	2.00 max
Phosphorus (P)	0.04 max
Sulfur (S)	0.04 max
Chromium (Cr)	18.0 - 21.0
Nickel (Ni)	8.0 - 11.0



DIMENSIONS								
Part No.	Nominal Pipe Size		L		W		Weight	
	A	B	inches	mm	inches	mm	lbs	grams
SSPEX-C05	1/2"	1/2"	1.40	35.56	0.45	11.43	0.03	13.61
SSPEX-C0705	3/4"	1/2"	1.40	35.56	0.65	16.51	0.04	18.14
SSPEX-C07	3/4"	3/4"	1.40	35.56	0.65	16.51	0.04	18.14
SSPEX-C1007	1"	3/4"	1.55	39.37	0.85	21.59	0.07	31.75
SSPEX-C10	1"	1"	1.75	41.91	0.85	21.59	0.08	36.29



25 Whaley Avenue, PO Box 310, Milverton, ON CANADA N0K 1M0
Tel: 800-561-3164

boshart.com ♦ blog.boshart.com